

State of Wyoming Corner Record

(In compliance with the CORNER PERPETUATION AND FILING ACT, Wyoming Statutes, 1977, Section 36-11-101, et. seq., and the Rules and Regulations of the Board of Registration for Professional Engineers and Professional Land Surveyors.)

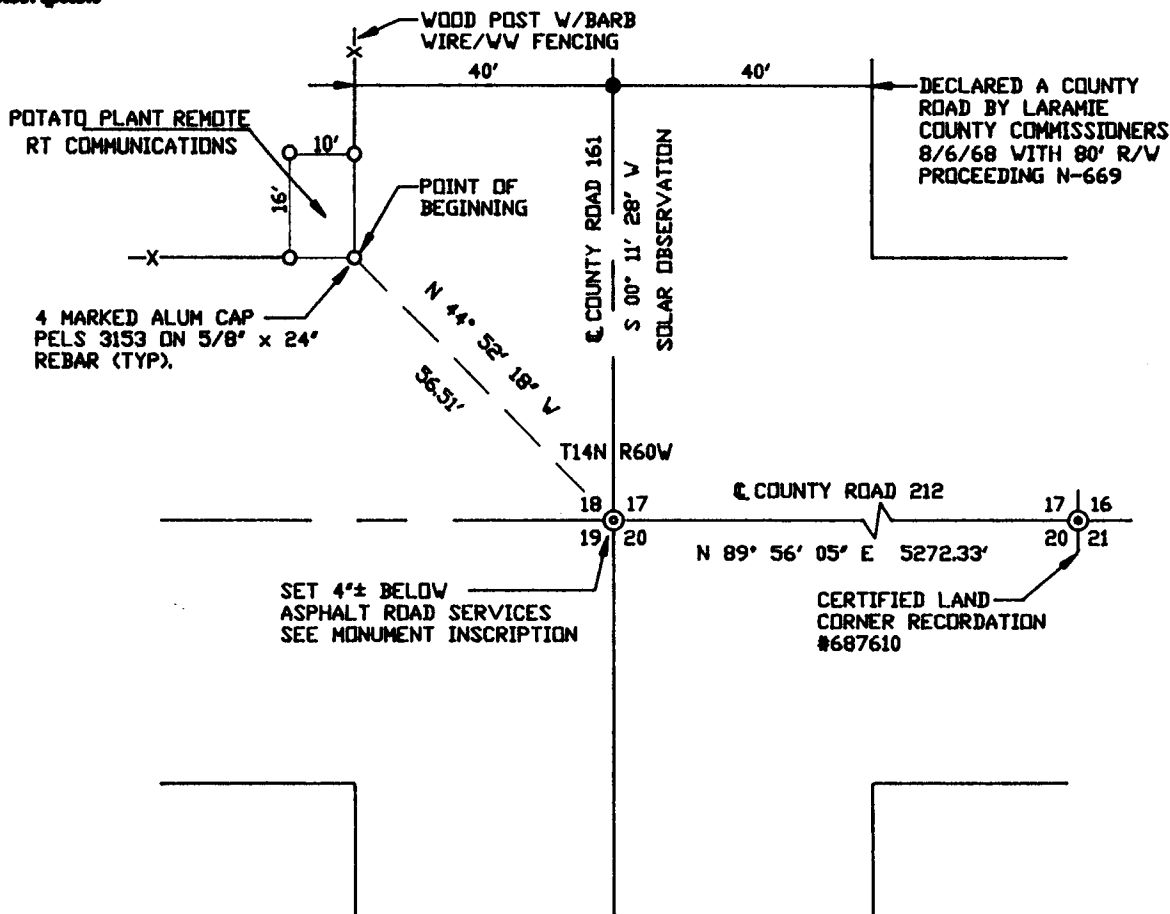
Reverse side of this form may be used if more space is needed.

Record of original survey and citation of source of historical information (if corner is lost or obliterated). Description of corner monumentation evidence found and/or monument and accessories established to perpetuate the location of this corner. Sketch of relative location of monument, accessories, and reference points with course and distance to adjacent corner(s) (if determined in this survey). Method and rationale for reestablishment of lost or obliterated corner.

Found no evidence of monumentation at the intersection of county roads 212 and 161. Therefore used road intersection with ties as shown as best available evidence to establish subject section corner.



Monument Inscription



LARAMIE COUNTY CLERK
CHEYENNE, WY.

'96 MAR 5 PM 1 02

Date of Field Work: 12/16/95 Office Reference: Field Book #44 page 31

CROSS INDEX DIAGRAM

1	2	3	4	5	6	7	8	9	10	11	12	13	14	15	16	17	18	19	20	21	22	23	24	25
A																								
B																								
C																								
D																								
E																								
F																								
G																								
H																								
I																								
J																								
K																								
L																								
M																								
N																								
O																								
P																								
Q																								
R																								
S																								
T																								
U																								
V																								
W																								
X																								
Y																								
Z																								

Firm/Agency, Address

PREPARED BY:
Armstrong Engineering Services
916 E. Carlson
Cheyenne, Wyoming 82009
(307) 632-2559

This corner record was prepared by me or under my direction and supervision.

SEAL & SIGNATURE

Professional Engineer (Civil) & Surveyor
WILLIAM B. ARMSTRONG
3153
DATE 3/4/96
WYOMING

William B. Armstrong

Corner Name: Section Corner Section: 18|17 19|20 T 14N R 60W; 6th P.M. Cross-Index No.: N-5
SBRPEPLS/PLSW: March 1994 (CICR_SJA)